



Current News



Future of Broadband and GPS

Inside...

Current News	1
Future of Broadband	1
Mid-TN GIS Forum	1
Items of Interest	2
Training	2
Industry News	2
Tracing TN History	2
Wilson Co. GIS User Group	3
March Meeting	3
May Meeting	3
Activities of Local GIS	3
Wilson Co. GIS Committee	3
Interactive Mapping	4
Contacts	4
Meeting Schedule	4

On March 1, 2001, LightSquared's predecessor, Mobile Satellite Ventures applied to the FCC to use a "highly innovative and spectrum-efficient combination of spot-beam satellites and terrestrial base stations to substantially improve coverage, capacity, and reliability of mobile communications without using any additional spectrum." On January 26, 2011, The Federal Communications Commission granted LightSquared's Request for Modification of its Authority for an Ancillary Terrestrial Component. The grant allowed LightSquared and its wholesale customers to offer terrestrial-only devices than having to incorporate both satellite and terrestrial services. "We find good cause to grant LightSquared a conditional waiver of Section 25.149(b)(4) of the Commission's rules for services provided by LightSquared using its MSS (Mobile Satellite Services) L-band spectrum," the FCC noted in its report.

Companies that provide global positioning systems, in addition to the United States Air Force, the operator of the GPS system, opposed the FCC waiver, saying that more time was needed to resolve concerns that LightSquared's service might interfere with their satellite-based offerings. LightSquared has promised to work with GPS providers and give the FCC monthly updates on a resolution to interference concerns.

LightSquared plans to provide network capacity on a wholesale-only basis to wireline and wireless communication service providers; cable operators; device manufacturers; web players; and content providers. LightSquared will sell its service to retailers and device makers, so that LTE wireless broadband service will be bundled into products. The integrated 4G-LTE-satellite network also will serve public sector projects including emergency preparedness and communications in times of crisis. The company announced in July 2010 that the network will be built by Nokia Siemens Networks. LightSquared expects to launch commercially in the second half of 2011 with four trial markets - Baltimore, Phoenix, Denver and Las Vegas. On April 21, 2011, LightSquared and SI Wireless announced a partnership that will give SI Wireless customers throughout rural under-served markets access to LightSquared's 4G-LTE national broadband network and satellite coverage. The bilateral roaming agreement also delivers service to parts of rural Illinois, Kentucky and Tennessee. The company has announced agreements with Cellular South, Best Buy, Cricket, and Open Range Communications.

LightSquared traces its roots back to 1988 and was known as American Mobile Satellite Corporation and later as Mobile Satellite Ventures after a merger between Motient Corporation and TMI Communications. It was most recently known as Skyterra, a company that provided comprehensive mobile satellite communications services. The company has operated in the North American market with two geostationary satellites since 1995. MSAT-2 is licensed in the United States and was launched in 1995. MSAT-1 is licensed in Canada and was launched in 1996. LightSquared was granted the first license to deploy and provide terrestrial service in the L-Band spectrum in November 2004.

<http://en.wikipedia.org/wiki/LightSquared>

Mid TN Forum on GIS-TNGIC

The Middle Tennessee Forum on GIS will be held on Wednesday & Thursday, **Nov. 2-3, 2011** at the **Rutherford County Agriculture Center in Murfreesboro, TN**. This meeting is open and free for anyone in the GIS profession as well as those interested in GIS. Presentations will be on Wed. Nov. 2 and workshops will be held on Thur. Nov. 3. You are invited to submit a presentation abstract. Any topic related to current GIS initiatives will be considered. Registration is still under construction but will open soon! For more information contact — [Suzanne White \[Suzanne.White@tn.gov\]](mailto:Suzanne.White@tn.gov)



Items of Interest



POLISH YOUR SKILLS-Training Opportunities

GEO-JOBE: ESRI & Trimble Authorized

July 19-20, 2011	ArcGIS Desktop I
August 2-4, 2011	ArcGIS Desktop II
August 16-17, 2011	ArcGIS Desktop III
August 30-31, 2011	ArcGIS Desktop I
September 13-15, 2011	ArcGIS Desktop II
September 27-28, 2011	ArcGIS Desktop III
Group Training Available Upon Request	

Information & Registration : <http://www.geo-jobe.com/training>

ESRI Training Web Site: esri.com/training

ESRI Training Matters Blog: esri.com/trainingblog

ESRI Technical Certification: esri.com/certification

Instructional Series Podcasts: esri.com/podinstruct

Training Seminars: Live - esri.com/lts Recorded— esri.com/ts

Subscribe to ESRI Training News: esri.com/edtrainingnews

Free Courses in ArcGIS 10

<http://training.esri.com/gateway/index.cfm?fa=search.results&searchterm=arcgis10>



INDUSTRY NEWS

UNIVERSAL GEOCODING FROM NAC Assigns Unique Codes to Every Location on Earth

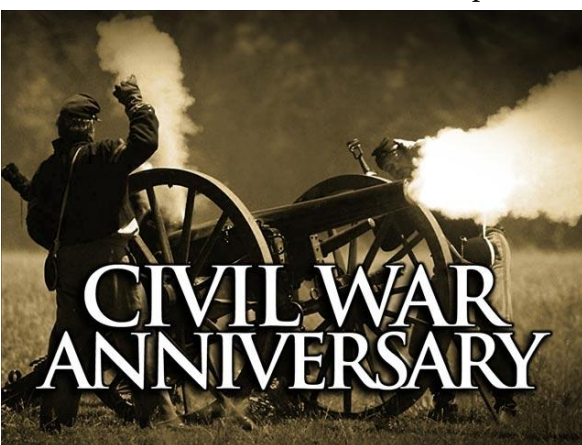
By Susan Smith

In an interview with Dr. Xinhang Shen, president of NAC Geographic Products Inc. , he spoke of NAC's creation of its own Universal Geocoding format. NAC Geographic Products Inc. developed the [Universal Address System](#) that has assigned a unique code called Universal Address to every location on the earth. According to Dr. Shen, there are many organizations using NACs as their addresses. For example, you can search Google with keywords: "[Universal Address](#)" and [camp-ground](#) to see thousands of campgrounds with their Universal Addresses.

Read More http://www10.gisSAFE.com/nbc/articles/view_weekly.php?articleid=963753

USING GIS TO TRACE TENNESSEE HISTORY

CHATTANOOGA (WRCB) – Tennessee is turning to modern technology to trace the state's history. On Wednesday the Tennessee Department of State announced an interactive map of events during the Civil War, using the state's geographic information system or GIS. The first of its kind in the nation, the Tennessee Civil War Geographic Information System (GIS) Survey shows hundreds of locations where Civil War battles, engagements, skirmishes and other military actions took place. The interactive GIS application for the Civil War in Tennessee is now available at: <http://tnmap.tn.gov/civilwar/>. The web site allows modern aerial photography, street maps and land use maps to be overlaid onto sites where Civil War actions occurred in Tennessee. It also links narrative information about these events from the [Tennessee Civil War Sourcebook](#). Complete accounts of all the state units that served in the war are searchable by



county along with 1860 United States Census data. "Learning about the Civil War is fundamental to understanding Tennessee history," said Secretary of State Tre Hargett. "By linking information from the State Library and Archives with maps, Tennesseans can tour battlefields across the state without leaving their homes." Other TSLA materials used in the project include original documents, photos, historic maps and military unit histories by county of origin. The Tennessee Civil War GIS Survey builds on efforts of the Tennessee Civil War Preservation Association and the Tennessee Civil War National Heritage Area. The Tennessee Civil War GIS Survey is a project of the [Tennessee State Library and Archives](#) (TSLA) and is funded by the [American Battlefield Protection Program](#) (ABPP) of the National Park Service. TSLA is a division of the Office of the Secretary of State.

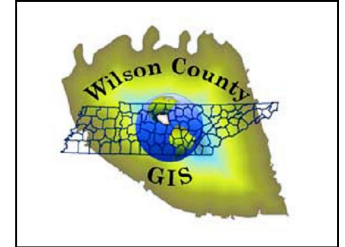
<http://www.wrcbtv.com/Global/story.asp?S=14911835>

Wilson County GIS User Group



March 2, 2011 Meeting— Our guest speaker was **Zach Layne, Account Manager**, Esri, 321 Billingsly CT, Franklin, TN 37067, Suite 11, 615-599-4120 x8682, zlayne@esri.com, www.esri.com. Zach presented the methods and means of using GIS in the field. Mobile GIS has become a very desirable and sought after technical feature from ESRI.

A new GIS Users Group Logo was selected from several designs. Shown at right is the final selection. The designs were on display for the members to vote for their favorite design.



May 2011 Meeting—The topic of this meeting was a demonstration from Geo-Jobe about the new look and features of the county and cities interactive website. One feature everyone is looking forward to is its ability to interface with Google Maps.

Presentations & Meetings—During the December 2010 meeting the GIS users group discussed goals for the coming year, 2011. One goal was to find ways to grow our GIS Users Group, and expand on its diversity, to seek key players in various industries as an effort to drive Wilson County forward in this technical field and enhance all our operations. In an effort to accomplish this goal, some members have given by actively presenting GIS and demonstrating our services to others, while some have been attending meetings to learn more about this field. Bobby Sullins and Steve Henley with West Wilson Utility District have done a few WWUD Power Point Presentations for both the Chamber of Commerce and Rotary Club recently and have invited attendees from both organizations to team up with the GIS Users Group.

Chris Leauber with Wilson County Water and Wastewater Authority established a spot for Pam Wrye, Erika Potts and Lynn Pruett to present GIS technology to Leadership Wilson's April session. The presentation centered on how technology has changed over the years and what GIS can do for the community and individuals. On display was an old planimeter, a tool for measuring area which belongs to the County Assessor's office, old linen drawings, an old map atlas of the City of Lebanon, an out dated Leroy Lettering Set and many other out dated drafting tools. After a discussion of the old out dated methods of drafting and mapping, the demonstration highlighted the many uses of GIS today and the functionality of GIS locally. Many in the group were unaware of the GIS, in particular the interactive mapping website of the county and cities.

In April, Erika Potts and Jeffrey Dedman with the City of Lebanon attended Trimble Utilities Field Solutions-Leveraging GIS Solutions to Improve Utility Operations. They also attended Geo-Jobe's 2011 GIS / GPS Technology Roadshow in June. The Trimble presentation and Geo-Jobe's Technology Roadshow were held at Geo-Jobe GIS office. Great 'hands-on' demonstrations of ever-changing mobile technology took place at both affairs.

In April, the 2011 TNGIC Annual GIS Conference was held in Gatlinburg, TN. Currently there are over 200 TNGIC members representing many varied agencies throughout the state. Wilson County was represented at the annual conference by the following agencies...

Wilson County Tax Assessor - Beverly Sellars, GIS/Parcel Mapper

Wilson County E-911 - Karen Moore, GIS/Data Manager

City of Mt. Juliet Planning/GIS -Bo Logan, GIS Coordinator entered a map "Specialized uses within the City" in the Map Contest

City of Lebanon GIS - Jeffrey Dedman, GIS Technician 1

West Wilson Utility District - Bobby Sullins, GIS / Security Supervisor

WEMA Damage Assessment—Steve Spencer activated the GIS Damage Assessment Team on April 28, 2011. There was heavy damage across the county especially in Mt. Juliet and Watertown/Statesville from high winds of the recent storms. The team assembled at the WEMA Training Center to receive instructions to perform a damage assessment in these areas. While there was significant damage to residential dwellings in these areas, it was not wide spread and the total damage did not qualify the county for a state declaration. Thank you to the members of the team who helped to get this necessary job accomplished.

Wilson County GIS Committee

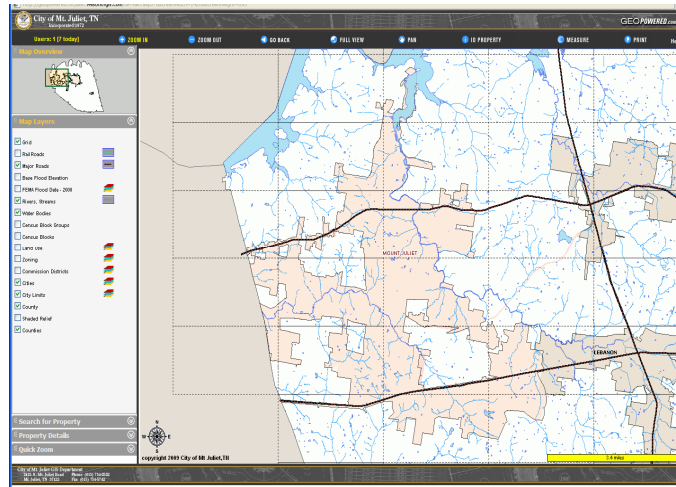


At the Wilson County GIS Committee meeting that was held in January 2011, a subcommittee was formed to facilitate the process of compiling a new GIS Master Plan for the County as a whole. The committee members included: Jason Brockman, JR Kelley, Julie Phillips, Lynn Pruett and Tammy Stokes. The committee went to work immediately and with much cooperation among the newly formed subcommittee, the Wilson County GIS Enterprise System participants and members of the GIS Users Group, a new Master plan was presented and approved at the April Wilson County GIS Committee meeting. This Master Plan documents who and what the GIS enterprise is and provides guidance to prospective enterprise participants as far as fees and software/hardware requirements. The plan outlines a five year business/action plan which is to be defined. The responsibility of the implementation of the approved plan will be under the direction of the Wilson County Planning Department. The master plan is located on the new Wilson County Planning website under the GIS section. Special thanks go to GEO-Jobe GIS Consulting for all of their help with the master plan as well.



Interactive Mapping: Wilson County, Cities of Mt. Juliet & Lebanon

One of the most highly complicated functions resulting from the efforts of the county and cities GIS Teams combined with the services of the Wilson County Enterprise System is the GIS Interactive Mapping sites. At these sites the latest aerial photography and topographical data can be viewed; property searches either by owner or by address can be performed. Through the Wilson County Enterprise System, the County Property Assessor's Office shares information allowing access to property data. Also, the county has an agreement with the state property



Link to Mapping:: (view of Mt. Juliet mapping above)

Wilson County - <http://geopowered.wilson.wilsonsngis.com/>

City of Mt. Juliet - <http://geopowered.mtjuliet.wilsonsngis.com/> (Above)

City of Lebanon - <http://geopowered.lebanon.wilsonsngis.com/>

website to allow property data to be displayed on individual parcels. Information such as zoning districts, FEMA flood zones and US census blocks can be determined by individual parcel. Additional features are a linear measuring tool and a print button, either to a file or a paper copy.

On the City of Lebanon site, day of street pickup, mosquito fogging and address information can be determined per parcel.

All this is available to anyone with access to the internet; it is one of our most popular functions of GIS data.

Contacts

Participants of WES

Wilson County (615-449-2836)
GIS Manager — Julie Phillips
julie.phillips@wilsoncountyttn.com
<http://www.wilsoncountypartners.com>

City of Lebanon (615-444-3647)
GIS Manager — Lynn Pruett-x254
lpruett@lebanontn.org

GIS Tech II — Erika Potts-x253
pottse@lebanontn.org

GIS Tech I — Jeffrey Dedman-x272
dedmanj@lebanontn.org

City Planner — Will Hager-x252
hagerw@lebanontn.org
<http://www.lebanontn.org/>

WEMA (615-444-8799)
Marty Heckman
heckmanm@wilsonema.com
Chris Andrews
andrewsc@wilsonema.com
<http://www.wilsoncountyjema.com/>

911 Emergency (615-449-7155)

JR Kelley
jrkelley@wilson911.org

Karen Moore
kmoore@wilson911.org
www.wilson911.org

City of Mt. Juliet (615-754-2552)

GIS Coordinator — Bo Logan
blogan@cityofmtjuliet.org
<http://www.cityofmtjuliet.org/>

JECDB (615-443-1210)

Tammy Stokes
tstokes@doingbiz.org
<http://www.doingbiz.org>

Gladeville Utility (615-449-0301)

Debbie Dodson
dodbson@galdevilleutility.com

Matt Murdock
mmurdock@galdevilleutility.com

West Wilson Utility (615-758-5682)

Bobby Sullins—x 168
bobbys@westwilsonutility.com
<http://www.westwilsonutility.com/>

Property Assessor (615-444-8661)

Pam Wrye—pwrye@wilsoncountyttn.com
Beverly Sellars—bsellars@wilsoncountyttn.com
<http://www.wilsoncountypropertyassessor.com/>

Water & Wastewater Authority of Wilson County

(615-449-2951)
Chris Leauber—cleauber@wwawc.com
<http://www.wwawc.com/>

Host and Administrator of WES

GEO-JOBE (615-883-0085)
<http://www.geo-jobe.com/>



Meeting Schedule

Wilson County GIS Committee meets regularly the first month of every quarter on the second Wednesday at 9 a.m. in the County Commission Room, second floor, Wilson County Courthouse. Next meeting will be Wednesday October 12, 2011.

GIS Users Group has been meeting once a month for the last couple of years. Starting in 2011, meetings will be every other month. Scheduling fluctuates as events allow.

Each meeting is planned with users' interest in mind. Topics of interest may be submitted to any member listed in this newsletter. Any member wishing to present a topic or demonstration, may do so and earn points toward the completion of the GISP (Geographic Information System Professional) certificate.

Newsletter On-Line:

<http://wilsoncountypartners.com>
<http://www.lebanontn.org/departments/gis/UserGroupNewsletter.aspx>

Newsletter Editor: Lynn Pruett, City of Lebanon GIS Manager

Erika Potts, City of Lebanon GIS Technician II

User Group Members— The new year 2011, brings new challenges. As technology changes so do the demands of GIS users. Our challenge is to educate those who could benefit from this technology but yet are not engaged in using the services provided by this group and the system available. Look for avenues of education and advertising GIS Enterprise!