



IN REPLY REFER TO

DEPARTMENT OF THE ARMY  
NASHVILLE DISTRICT, CORPS OF ENGINEERS  
110 9TH AVENUE SOUTH, ROOM A-405  
NASHVILLE, TENNESSEE 37203

DEC 19 2018

Project Planning Branch

TO ALL INTERESTED PARTIES:

The U. S. Army Corps of Engineers, Nashville District has prepared a draft Integrated Detailed Project Report and Environmental Assessment (DPR/EA) and unsigned Finding of No Significant Impact (FONSI), dated December 2018 for the Bartons Creek Watershed Flood Risk Management Study. The draft DPR/EA analyzes potential solutions for flooding problems within the Bartons Creek Watershed in Wilson County, Tennessee, including the city of Lebanon. Figure 1 shows the study area for the project.

In addition to the "no action" alternative, the draft DPR/EA evaluates a variety of flood risk management measures at several locations. The tentatively selected plan (TSP), proposes modifications to the existing Stumpy Lane Bridge over Sinking Creek to temporarily detain water approximately seven to ten hours longer than normal on a 22.69 acre portion of the upstream Sinking Creek floodplain. The detention footprint and associated easements would be located on several adjoining private property parcels (Figure 2). DPR/EA evaluated environmental effects of the TSP and the "no action" alternative under the following categories: geology, soils, surface water, groundwater, flood plains, wetlands, water quality, fish/wildlife habitat, terrestrial/aquatic vegetation, fauna, federal/state threatened and endangered species, recreational/scenic resources, cultural resources, air quality, noise, hazardous/toxic substances, socioeconomic and environmental justice. The City of Lebanon supports the project as proposed in the draft DPR/EA.

This letter serves as a Notice of Availability for reviewing the draft DPR/EA and unsigned FONSI. The draft DPR/EA is prepared pursuant to the National Environmental Policy Act (NEPA), Council on Environmental Quality Regulations (40 CFR 1500-1508), and the USACE implementing regulation, ER 200-2-2, 1988, *Policies and Procedures for Implementing NEPA*. Electronic copies of the documents can be found at: <http://www.lrn.usace.army.mil/Media/Public-Notices/Category/10561/project-planning-branch/>.

Please submit any written comments no later than thirty days from the date of this letter to ensure consideration in the final DPR/EA. Send your written comments to the address listed on the letterhead, ATTN: CELRN-PMP (Travis Wiley), or email your comments to [travis.a.wiley@usace.army.mil](mailto:travis.a.wiley@usace.army.mil). Your participation is greatly appreciated.

Sincerely,

  
for Angela E. Dunn  
Chief, Project Planning Branch

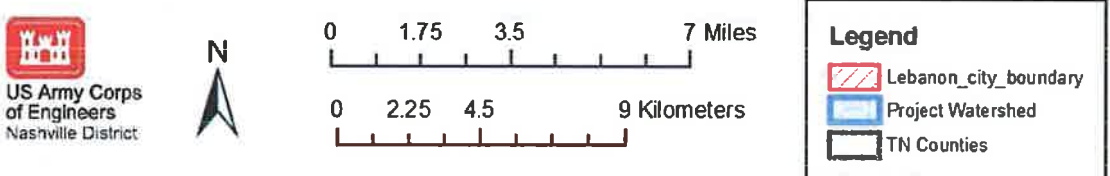
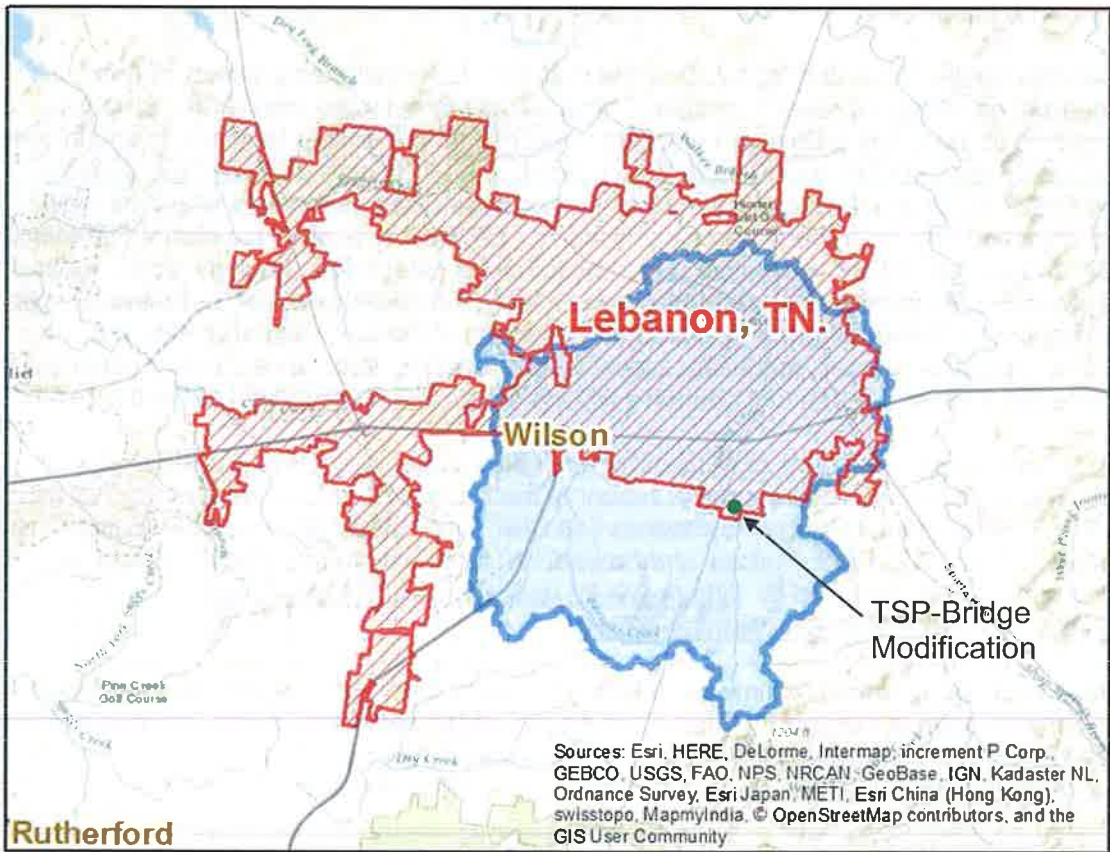


Figure 1. Bartons Creek Watershed Study Area

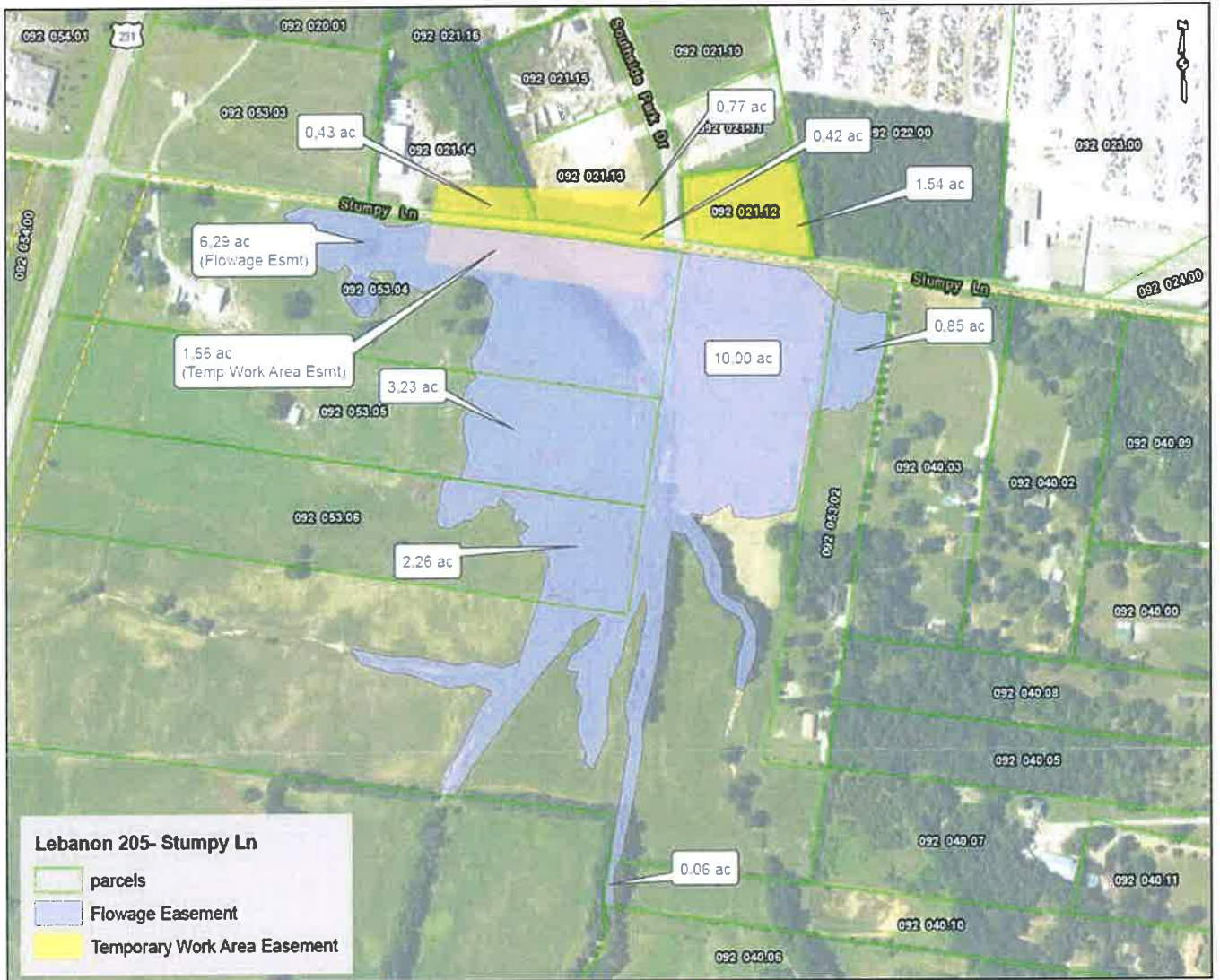


Figure 2. Proposed Detention Area Footprint and Associated Land Parcels