

This document provides information about Tennessee's planning and implementation efforts for COVID-19 vaccine allocation and distribution.

HIGHLIGHTS

- The Tennessee Department of Health developed [Tennessee's COVID-19 Vaccination Plan](#) after review of the CDC's [COVID-19 Vaccination Program Interim Playbook for Jurisdictional Operations](#), the recommendations of the CDC's [Advisory Committee on Immunization Practices](#), and the National Academies of Sciences, Engineering and Medicine's [Framework for Equitable Allocation of COVID-19 Vaccine](#), and in consultation with Tennessee's Unified Command Group and a stakeholder group of 30 partner organizations.
- The plan was updated Dec. 30, and is subject to change given private sector dynamics and decision-making at the federal level.
- The U.S. Food and Drug Administration has issued emergency use authorization for the Moderna COVID-19 vaccine in individuals 18 years of age and older, and for the Pfizer-BioNTech COVID-19 vaccine in individuals 16 years of age and older.
- The safety of COVID-19 vaccines is a top priority, and the U.S. vaccine safety system ensures all vaccines are as safe as possible. Learn more at www.cdc.gov/coronavirus/2019-ncov/vaccines/safety.html.
- Tennessee is one of only eight states in the country that has administered at least 50 percent of its allocated vaccine doses. The CDC's COVID-19 vaccine dashboard can be found at [CDC COVID Data Tracker](#).

CURRENT ACTIONS

- Tennessee began administering COVID-19 vaccines to Phase 1 individuals on Dec. 17, 2020. COVID-19 vaccines have been administered to residents in all 95 Tennessee counties.
- To date, more than 201,000 Tennesseans in these priority populations have received their first dose of COVID-19 vaccine. More than 87,000 of these vaccinations were provided in the past week.
- Vaccine shipments are arriving this week at county health departments and pharmacies that are partnering with long-term care facilities to vaccinate their residents and staff members onsite. Skilled nursing facilities are prioritized first, as their residents are more medically fragile, with assisted care living facilities and homes for the aged to follow.
- Long-term care facilities are being scheduled for vaccinations through the federal partnership with Walgreens and CVS pharmacies. This partnership covers more than 90 percent of Tennessee LTCFs.
- As county health departments vaccinate phase 1a2 and begin to vaccinate those ages 75 years and older, pharmacies will also be administering vaccines to long-term care facility residents and staff members onsite. While this may result in smaller shipments to county health departments, it is critical to get the vaccines as quickly as possible to those at highest risk of severe illness or death.
- Tennesseans can learn what phase of the vaccination plan their county is in with a new online tool at <https://covid19.tn.gov/covid-19-vaccines/vaccine-phases/>.
- Tennesseans can learn the phase in which they qualify for vaccination with a new online tool at <https://covid19.tn.gov/covid-19-vaccines/eligibility/>.
- TDH holds a webinar for health care providers every Friday from noon-1 p.m. Central time for providers to submit questions that are answered by the immunization program team. Learn more and register for the Jan. 15 webinar at www.tn.gov/content/tn/health/cedep/ncov/covid-19-webinars.html.

EXPECTED VACCINES

Pfizer

- To date, 214,500 doses have been distributed directly from Pfizer to facilities vaccinating Phase 1a populations.
- Tennessee is now receiving allocations designated for the administration of the second vaccine dose to

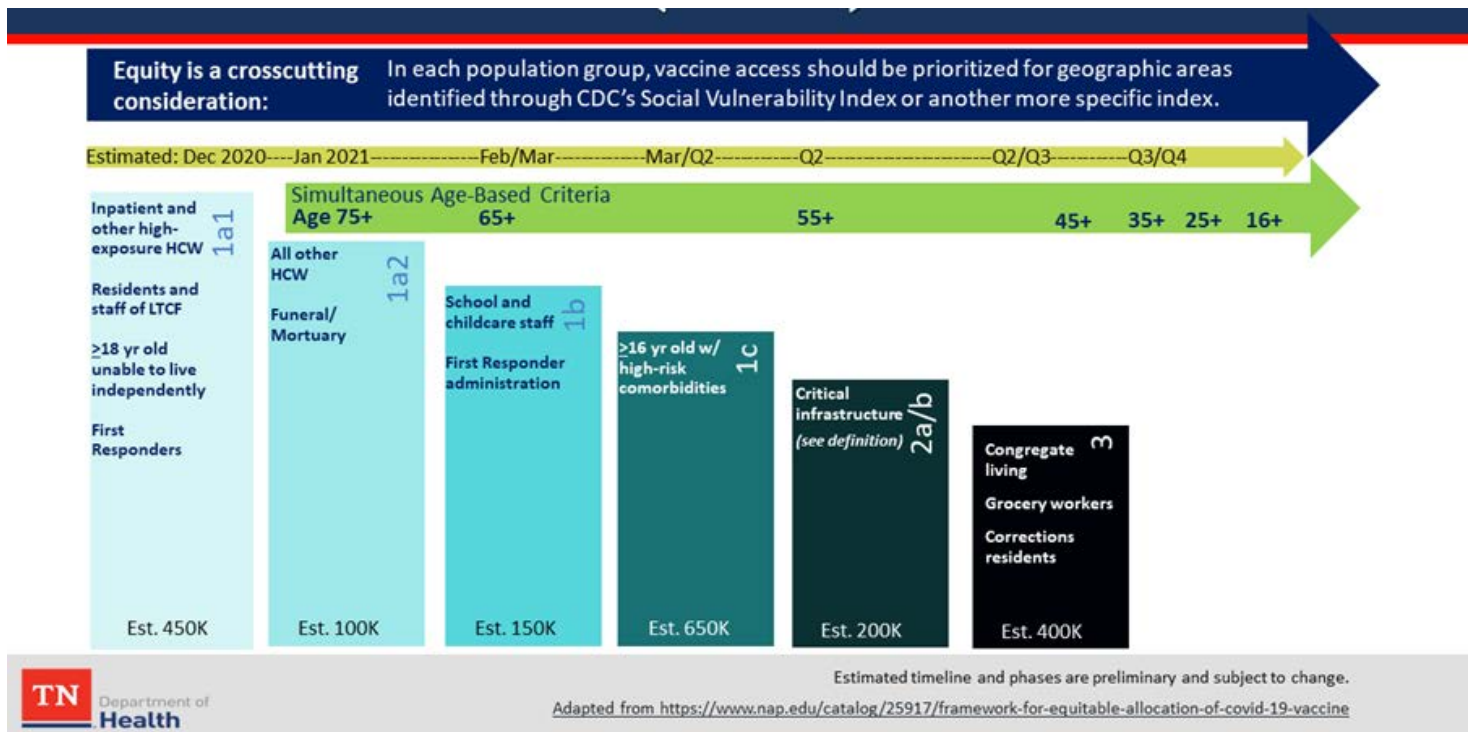
those individuals vaccinated last month. Some people will receive their second dose this week.

- Pfizer vaccine is a two-dose regimen with 21 days between doses.

Moderna

- To date, 113,700 doses have been distributed to hospitals, select pharmacies and all 95 county health departments.
- To date, this vaccine is being provided to Phase 1a1 and 1a2 populations including frontline health care workers, first responders, home health care providers, student health care providers and group homes for individuals with intellectual and developmental disabilities.
- Tennessee will soon begin receiving allocations designated for the administration of the second dose of vaccine to individuals vaccinated earlier this month. Some individuals will begin receiving second doses as early as Jan.17, 2021.
- Moderna vaccine is a two-dose regimen with 28 days between doses.

TENNESSEE ALLOCATION TIMELINE & PHASES



Tennessee COVID-19 Vaccination Reporting Dashboard:

www.tn.gov/content/dam/tn/health/documents/cedep/novel-coronavirus/Vaccine.pdf

FAQs on Tennessee's COVID-19 Vaccination Plan: www.tn.gov/content/dam/tn/health/documents/cedep/novel-coronavirus/COVID-19_Vaccine_FAQ.pdf

Tennessee's COVID-19 Vaccination Plan: www.tn.gov/content/dam/tn/health/documents/cedep/novel-coronavirus/COVID-19_Vaccination_Plan.pdf